

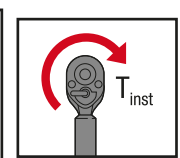
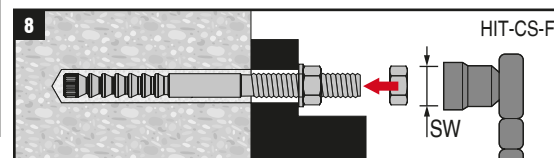
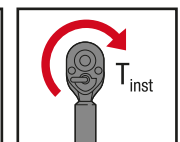
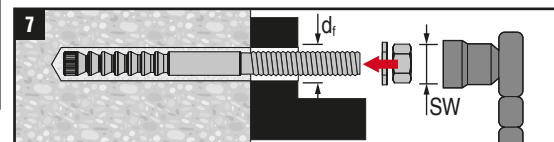
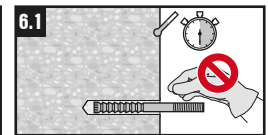
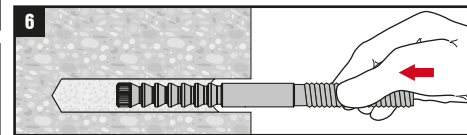
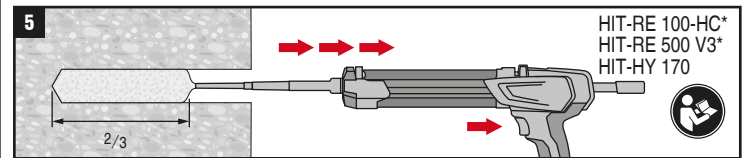
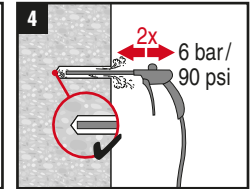
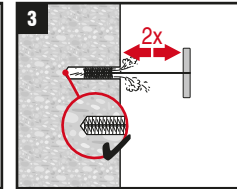
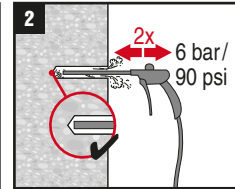
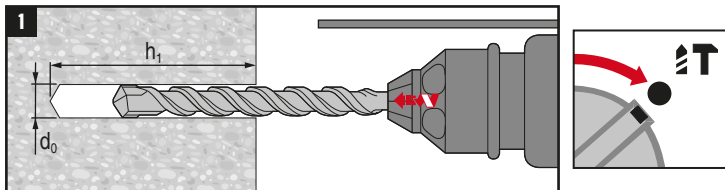
**CE**

21  
Hilti AG  
FL-9494 Schaan  
Hilti Werke

2873-CPR-201-31  
ETA-17/0315  
Notified body 2873  
EAD 330499-01-0601

www.hilti.group

HIT-CS	HIT-CS-F	ø d <sub>0</sub>	h <sub>nom</sub> [mm]	h <sub>1</sub> [mm]	SW [mm]	T <sub>inst</sub> [Nm]	
						HIT-CS	HIT-CS-F
M12x110	M12x110	ø 14	110	115	19	30	40
*M16x125	M16x125	ø 18	125	130	24	80	
*M20x170	M20x170	ø 24	170	175	30	150	
x	*M24x210	ø 28	210	215	36	200	



\* not covered in ETA