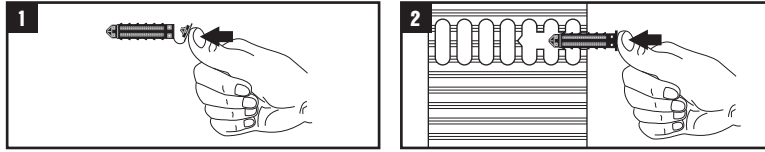
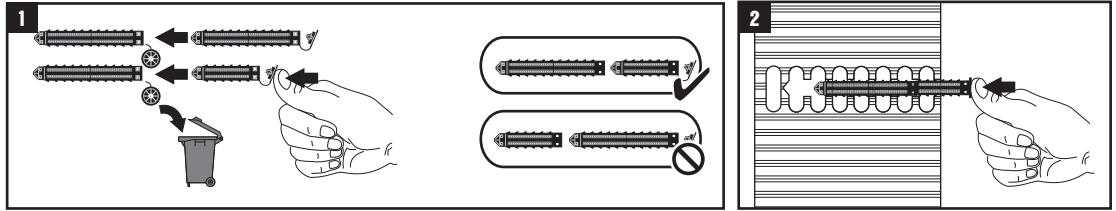





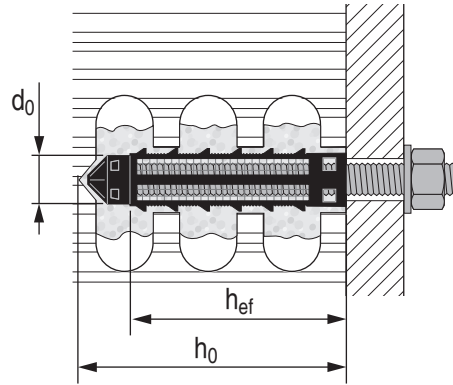
**A**



**B**



	d <sub>0</sub> [mm] [inch]	h <sub>0</sub> [mm] [inch]	h <sub>ef</sub> [mm] [inch]	filling volume V [ml / fl oz]
HIT-SC 12 x 50	12 1/2"	60 2-3/8"	50 2"	12 0,41
HIT-SC 12 x 85	12 1/2"	95 3-3/4"	80 3-1/4"	24 0,81
HIT-SC 16 x 50	16 5/8"	60 2-3/8"	50 2"	18 0,61
HIT-SC 16 x 85	16 5/8"	95 3-3/4"	80 3-1/4"	30 1,01
HIT-SC 18 x 50	18 11/16"	60 2-3/8"	50 2"	24 0,81
HIT-SC 18 x 85	18 11/16"	95 3-3/4"	80 3-1/4"	36 1,22
HIT-SC 22 x 50	22 7/8"	60 2-3/8"	50 2"	30 1,01
HIT-SC 22 x 85	22 7/8"	95 3-3/4"	80 3-1/4"	48 1,62
 				
HIT-SC 16 x 85 + 16 x 50	16 5/8"	150 5-7/8"	130 5-1/8"	48 1,62
HIT-SC 16 x 85 + 16 x 85	16 5/8"	180 7-1/8"	160 6-1/4"	60 2,03
HIT-SC 18 x 85 + 18 x 50	18 11/16"	150 5-7/8"	130 5-1/8"	60 2,03
HIT-SC 18 x 85 + 18 x 85	18 11/16"	180 7-1/8"	160 6-1/4"	72 2,43
HIT-SC 22 x 85 + 22 x 50	22 7/8"	150 5-7/8"	130 5-1/8"	78 2,64
HIT-SC 22 x 85 + 22 x 85	22 7/8"	185 7-1/4"	160 6-1/4"	96 3,25



HIT-SC	HIT-V, HAS	HAS	HIT-IC	
HIT-SC 12	M6	1/4"		
HIT-SC 16	M8, M10	5/16", 3/8"	M8	5/16"
HIT-SC 18	M12	1/2"	M10	
HIT-SC 22	M16	5/8"	M10, M12	3/8", 1/2"

Made in Germany  
[www.hilti.com](http://www.hilti.com)  
 Hilti = registered trademark of Hilti Corporation, Schaan, LI



2091747-07.2014