

HILTI

Smart Label

AI L2

AI L5

English



1 Safety

1.1 General safety instructions

Read all safety instructions and other instructions.

Keep all safety instructions and other instructions for future reference.

General safety instructions

- ▶ Do not cover the type identification plate or other labels.
- ▶ Do not cover openings in the casing of the tool or appliance.
- ▶ Do not obstruct switches, displays and warning lights.
- ▶ To avoid surface damage or chemical reactions, check that the label adhesive is compatible with the surface before applying the label.
- ▶ Keep away from children.
- ▶ Use of an additional primer is recommended in order to improve the adhesion of the labels.
- ▶ If you use additional products supplied by a third party, such as a cleaning agent or primer, observe their instructions.
- ▶ Shelf life is 2 years from the date of manufacture (see packaging).

2 Description

2.1 Intended use

Smart Labels are intended to be used to mark items of equipment with a unique identification number for inclusion in the **Hilti ON!Track** asset management system.

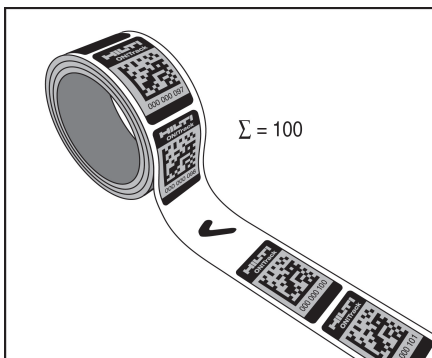
3 Technical data

3.1 Technical data

Application and storage temperature	-20 °C ... 45 °C (-4 °F ... 113 °F)
Surface temperature during application	21 °C ... 38 °C (70 °F ... 100 °F)

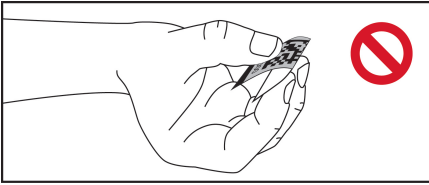
4 Instructions for use

4.1 Gaps in the numerical sequence



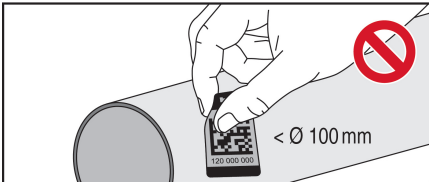
Gaps in the numerical sequence are the result of quality checks. Each package contains 100 Smart Labels.

4.2 Do not crease or fold



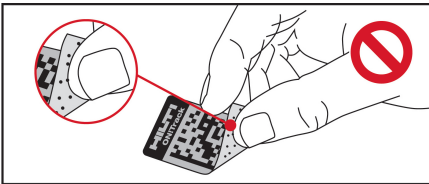
Do not crease or fold the Smart Label.

4.3 Surfaces with a large radius



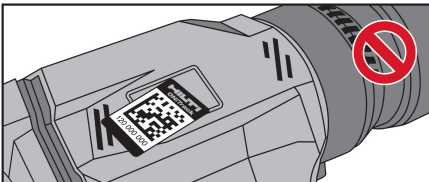
Do not apply the Smart Label to surfaces with a diameter of less than 100 mm (3.94").

4.4 Do not touch the adhesive surface



Do not touch or contaminate the adhesive surface of the Smart Label when you remove it from the roll.

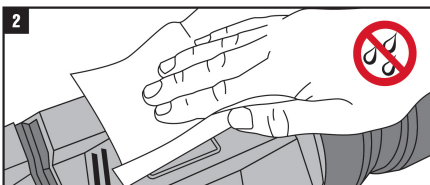
4.5 Positions for application of the Smart Label



Apply the Smart Label only to protected surfaces.
Take care to ensure that the Smart Label does not project beyond an edge.

5 Application

5.1 Cleaning the surface

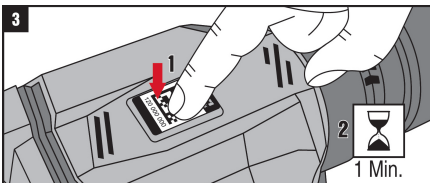


Before applying the Smart Label, clean the surface thoroughly to remove all traces of contaminants, especially oil and grease.

We recommend use of a suitable cleaning agent and a lint-free cleaning cloth.

Dry the surface thoroughly in order to achieve optimum adhesion.

5.2 Application pressure



Press the Smart Label into place with the heel of the hand or using a roller, applying even pressure. High pressure increases the adhesion of the Smart Label.

After applying the Smart Label, wait for a minute before using the equipment.

6 Manufacturer's warranty

- ▶ Please contact your local **Hilti** representative if you have questions about the warranty conditions.



Hilti Corporation

LI-9494 Schaan

Tel.: +423/234 21 11

Fax: +423/234 29 65

www.hilti.com

Hilti = registered trademark of Hilti Corp., Schaan

Printed: 15.03.2017 | Doc-Nr: PUB / 5338055 / 000 / 00



2153800

20170314